

SHARP®

PRO SERIES MONOCHROME DOCUMENT SYSTEMS



MX-M1056
MX-M1206



*"Most Reliable Monochrome
Copier MFP Brand 2018-2021"*

The Sharp Pro Series monochrome document systems feature world class productivity and impressive quality.

BRILLIANT AWARD-WINNING RELIABILITY – RESOURCEFUL FLEXIBILITY

efficiency

From scan-centric environments to in-plant copy rooms, the Sharp monochrome Pro Series MX-M1056 and MX-M1206 deliver advanced features that can help streamline your workflow like never before. These models are built on proven technology with award-winning reliability to handle the rigorous demands of high-volume environments. The latest EFI™ Fiery® platform allows for ultimate efficiency and operation, while providing unparalleled results.

Key Features

- **Ease of Use** – Award-winning touchscreen display offers a user-friendly graphical interface with simplified Easy Modes, intuitive job management and quick access to network services.
- **Available GBC® SmartPunch™ Plus** – Fully automated in-line punching system that dramatically streamlines workflow from printing to punching, perforating or creasing in one easy step.
- **Powerful Fiery Print Server** – Optional print server for advanced workflows and high productivity. Command WorkStation® is fully integrated with the Sharp touchscreen for unmatched control and ease-of-use.



"Most Reliable Monochrome Copier MFP Brand 2018-2021"

 POWERED BY
Adobe Embedded Print Engine

PRECISION ENGINEERED FOR HIGH PRODUCTIVITY



15.4" (DIAGONALLY MEASURED)
COLOR TOUCHSCREEN WITH
INTEGRATED KEYBOARD AND
TOUCHPAD

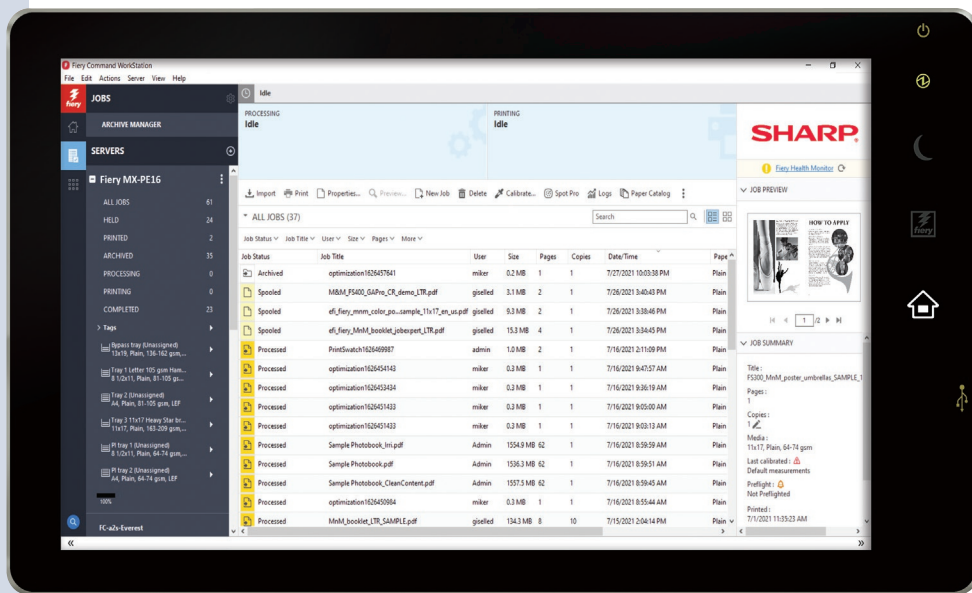
TRIPLE AIR-FEED PAPER
HANDLING OPTION

AVAILABLE FIERY®
PRINT SERVER



Designed and built for print-on-demand environments with world class features that exceed expectations.

- **300-sheet duplexing single pass feeder (DSPF)** scans documents at up to 240 images per minute.
- **Scan Preview** feature offers on-the-fly page editing with easy **fingertip navigation**.
- **Triple air-feed paper handling** option offers **high reliability** and is virtually maintenance-free.
- **Print Engine Paper Catalog** stores up to 1,000 media profiles for optimal print quality.
- **Adobe Embedded Print Engine technology**, which direct prints PDF files from a variety of sources with greater performance and rendering accuracy.



15.4" (diagonally measured) display with fully-integrated Fiery Command WorkStation®

- High-performance print controller with included **PCL® 6** and **Adobe PostScript 3**.
- Up to **13,500-sheet paper capacity** supports media up to **110 lb. cover stock (300 gsm)**.
- True **1,200 x 1,200 dpi** printing provides beautiful images and enhanced clarity for fine details such as small text and graphics.
- Easily **access popular cloud applications**, including Microsoft® OneDrive® for Business, SharePoint® Online, Box and Google Drive™, with the Sharp Cloud Connect feature.
- Standard **Job Management** features make it easy to print on-demand as well as view jobs, retain jobs, combine jobs, select print settings and more.
- Easily **convert documents** to popular Microsoft® file formats, as well as a variety of PDF formats, with standard OCR (optical character recognition) capabilities.
- Leading-edge, multi-layered security features include **Firmware Attack Prevention** and **Self Recovery**, **Application Whitelisting**, and the convenient Sharp **End-of-Lease** feature, which erases all data from the device at time of trade-in.



ADVANCED CAPABILITIES HELP ENSURE OPTIMUM RESULTS

Precise document handling with best-in-class features.

Sharp understands the importance of productivity. A high-capacity 300-sheet duplexing single pass feeder (DSPF) which scans documents at up to 240 images per minute is standard. This dual head feeder scans both sides of a document in a single pass, which helps maximize both efficiency and reliability. And for added convenience, it also includes a business card feeder for scanning a stack of up to 150 individual cards.

Distribute, Access and Print Your Documents with Ease

Sharp makes it easy to go beyond traditional network scanning with standard **Email Connect** and **Cloud Connect** features. With Email Connect, scan to email is seamlessly integrated with Microsoft Exchange/Office 365® and Gmail™ user accounts, making it easy to identify the sender of scanned files. With Cloud Connect, users can easily scan to and print from **Microsoft OneDrive for Business, SharePoint Online, Google Drive, Box and Dropbox**. For touchless operation, documents can be printed, copied and scanned with Synappx™ Go on your personal device.*

Production Class Paper Handling with Air-feed Technology

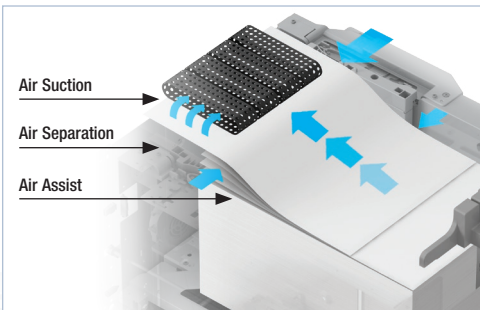
The Pro Series monochrome document systems offer up to **13,500-sheet paper capacity** and support **media types** up to 110 lb. cover (300 gsm). The Sharp 5,000-sheet large capacity paper feed option uses **air-feed technology**, which maximizes reliability and minimizes down time.

Advanced In-line Production Punch, Crease and Perforation

Fully automated **multifunctional GBC® SmartPunch™ Plus, in-line professional finishing solution** provides greater productivity and flexibility. With the new double punch, crease and perforation dies, customers can expand their finishing capabilities like never before. The SmartPunch Plus operation panel decreases operator time and provides increased control and convenience, saving valuable time and money.



High capacity 300-sheet DSPF with 150-business card feeder for increased efficiency and scanning capabilities.



Triple air-feed LCT paper trays maximize reliability and minimize downtime. Pneumatic sensors maintain consistent air flow.



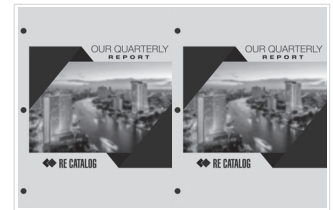
Convenient touchscreen delivers an enhanced user experience.



Creasing capability for precise folding



Adjustable perforation



Double Punch processing for two-up sheets

*Some features require optional equipment.



HIGH PRODUCTIVITY – INTUITIVE OPERATION

The MX-PE16 Fiery® Print Server Turns the Sharp Pro Series MX-M1056 and MX-M1206 monochrome models into power-packed workhorses.

Improved Productivity

Offering the highest performance-boosting power in its class, so you can get more work done, faster. Based on the latest Fiery FS400 Pro system software, the MX-PE16 Fiery Print Server delivers performance-boosting features that shorten turnaround times and produce fully-finished jobs that stand out and help differentiate your business.

Intuitive Centralized Print Job Management

The MX-PE16 Fiery Server utilizes **Fiery Command WorkStation®** as a centralized solution for print job management. The intuitive interface enables operators to monitor, prepare and troubleshoot jobs for production from multiple client computers or locally from the Sharp Pro Series touchscreen display.



SHORTEN TURNAROUND TIMES

EXPAND YOUR PRINT OFFERINGS

DIFFERENTIATE WITH VARIABLE DATA PRINTING

The MX-M1206 shown with Fiery Command WorkStation fully integrated at the control panel. In addition, the MX-PE16 Fiery Server includes a touchpad for precise menu navigation.



HIGHLY VERSATILE POWERHOUSE

reliability

The MX-M1056 and MX-M1206 Pro Series monochrome document systems offer a choice of two high-powered print servers to meet the demands of Central Reprographic Departments (CRD) and in-plants at speeds up to 105 ppm and 120 ppm, respectively.

High Quality Professional Output

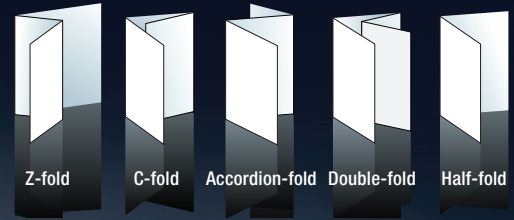
Produce compelling black and white documents with crisp razor-sharp graphics. True 1,200 x 1,200 dpi resolution helps ensure all your documents will look great every time.

Versatile Finishing Options

Two powerful finishing systems are available – a 4,000-sheet stacking finisher with 100-sheet stapling capacity or a 4,000-sheet saddle-stitch finisher, which can produce up to 80-page professional booklets when used with the available face trimmer unit.

Multi-Folding Unit

Provides a variety of folds, including z-fold, c-fold, accordion-fold, double-fold and half-fold.



Plockmatic Production Booklet Maker System

Produces 120-page professional, square-fold spine booklets in-line at engine speed.



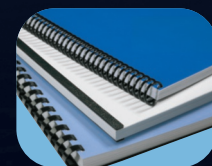
Multi-layered Security Features

Leading-edge security features provide enhanced protection of data and personal information and helps protect against network intrusions.



GBC® SmartPunch™ Plus

Production punching system produces up to ten commonly used punch styles for creating professional bound booklets, and increased flexibility with available creasing and perforation dies.



BREAKTHROUGH PERFORMANCE AND OPERATION

versatility



Optional MX-PE16 Fiery® Print Server

Based on the latest Fiery FS400 Pro system software platform, the Fiery Server delivers performance-boosting features that shorten turnaround times.

Post Sheet Inserter

Produce professional looking documents with pre-printed covers and chapter inserts with the available post sheet inserter.

Integrated Network Scanning

Sharp's ImageSEND™ feature provides one-touch document distribution. Scans to multiple destinations, including Email, FTP, Network Folder (SMB and Home Directory) and USB.

Duplexing Single Pass Feeder (DSPF)

Standard 300-sheet dual head document feeder scans both sides of a document in a single pass.

15.4" Touchscreen (diagonally measured)

A large, high resolution touchscreen with tablet-style navigation makes it easy to access features. You can also add shortcut keys to popular features, change the key layout or add a custom background theme.

Business Card Scanning

OCR scans up to 150 business cards with the DSPF and ability to export them to a contact management system.

500-sheet Multi-bypass Tray

Feeds paper sizes from 5-1/2" x 8-1/2" to 12" x 18".



Independent Motors

Insulated independent motors run quieter and provide higher reliability.

3,000-Sheet Standard Paper Capacity

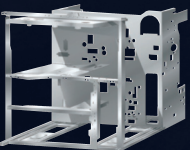
Includes 2,000-sheet letter size tandem tray and two 500-sheet letter/legal/ledger size trays. Add optional paper handling accessories for a maximum on-line paper capacity of 13,500 sheets.

Convenient Job Management

1TB hard disk drive provides on-board document storage. An intuitive thumbnail view makes it easy to select, edit, reprint, repaginate and more.

Handling

The Sharp advanced 5,000-sheet large capacity paper tray option utilizes triple air-feed technology, which directs air flow with precision accuracy for proper paper handling and enhanced media support up to 300 gsm. Two large capacity trays can be connected in tandem (as shown).



A highly-rigid Frame Design

Ensures reliability and durability to withstand heavy use from high-speed and high-volume output.

CONFIGURATIONS TO SUIT VIRTUALLY ANY ENVIRONMENT

Versatile and Customizable To Fit Your Needs

The MX-M1056/M1206 Pro Series monochrome document systems offer flexible paper handling and finishing options to accommodate any size in-plant or on-demand workflow environment.*



MX-M1206 shown with 3,500-sheet large capacity cassette, 100-sheet staple/saddle stitch finisher and 100-sheet bypass tray.

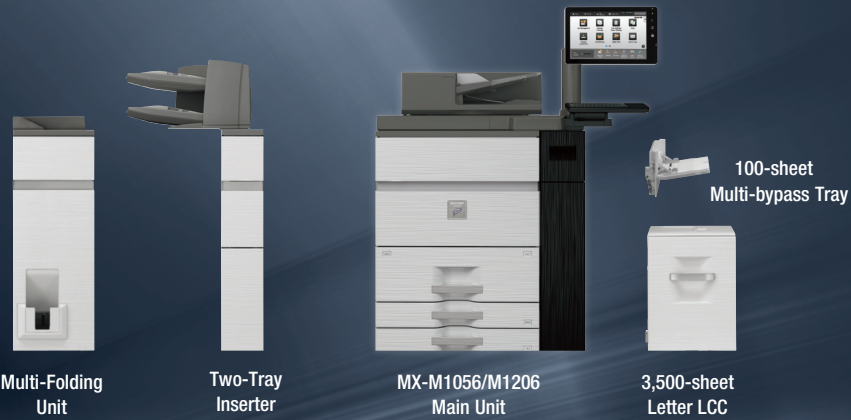


MX-M1206 shown with curl correction unit, inserter, multi-folding unit, GBC® SmartPunch™ Plus, 100-sheet staple/saddle stitch finisher, dual 5,000-sheet large capacity trays, 500-sheet multi-bypass tray and status indicator.

Modular Options Make It Easy To Build the System of Your Choice

Options for the MX-M1056/M1206 enable businesses to choose from several high performance finishing systems that offer up to 100-sheet stapling, professional saddle stitch booklet making and three-hole punching. More advanced configurations include a square-fold spine Booklet Making System, a professional punching/creasing/perforating system, a two-tray inserter, a multi-folding unit and a trimmer unit.

customize



Multi-Folding Unit

Two-Tray Inserter

MX-M1056/M1206 Main Unit

3,500-sheet Letter LCC

100-sheet Multi-bypass Tray



Plockmatic 120-page Production Booklet Maker System



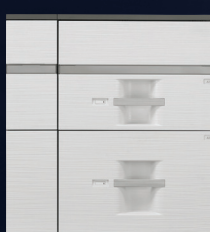
100-sheet Staple/Saddle Stitch Finisher



100-sheet Staple Stacking Finisher



GBC SmartPunch™ Plus



5,000-sheet Air-Feed LCT



500-sheet Multi-bypass Tray

*Some options not available in all configurations.

GET MORE OUT OF NETWORK RESOURCES



Streamline your document workflow and enhance productivity with Sharp OSA technology.

Integrating with Network Applications and Cloud Services Has Never Been So Easy

The MX-M1056/M1206 Pro Series monochrome document systems deliver **powerful document workflow capabilities** to help businesses leverage their network infrastructure, cloud-enabled services and more.* The Sharp OSA development platform allows businesses to harness the power of their network applications, back-end systems, even cloud-enabled services, right from the touchscreen panel of the device.

Save Time, Increase Efficiency

Any MX-M1056/M1206 anywhere in the organization can display choices that were once only available on a desktop PC. With **one-touch access** to business applications via Sharp OSA integration, you can start and finish a distribution task without worry.

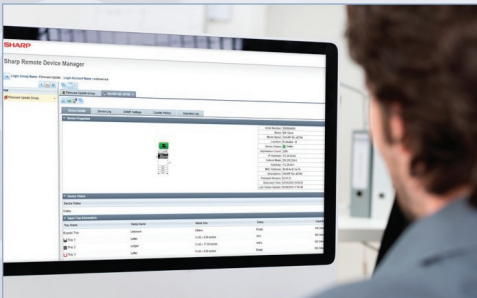
Customized Integration

Sharp OSA technology also provides **powerful customization**. With the ability to personalize applications and processes specific to your business, Sharp OSA technology can help eliminate redundancy and **streamline workflow**. And since Sharp OSA technology utilizes industry-standard programming languages and web APIs, third party software developers can deliver customized solutions to your business faster than ever.



* Some features require optional equipment.

ADVANCED DEVICE MANAGEMENT TOOLS MAXIMIZE EFFICIENCY



Sharp Remote Device Manager

Enhance operational efficiency through versatile device management with the MX-M1056/M1206.

Sharp Remote Device Manager

With **Sharp Remote Device Manager (SRDM)**, administrators can take control of system features and simplify installation and management. SRDM makes it easy to view service logs, click counts, history reports and more. The **security dashboard** monitors settings and can automatically reset the security policy if changed at the machine. Also, **Admin Password Management** and **Centralized Power Management** make it easy to deploy changes. Sharp also offers both **built-in** and additional **auditing hardware and software to control, access and track usage**.*

Take Charge of Usage and Costs

Through the Sharp **Embedded Web Page**, administrators and supervisors can define User Groups on the MX-M1056/M1206 to manage and restrict features such as copying, printing, and scanning. Custom user groups can be easily created to manage page counts.

24/7 Training with My Sharp™

Managing all of the advanced features of your Sharp product is simple and easy. Ask your Authorized Sharp Dealer about the **My Sharp** website. This dedicated customer training website is customized to your MX-M1056/M1206 and allows you to locate resources and find information specific to your configuration.



* Some features require optional equipment.



SAFEGUARD YOUR INTELLECTUAL PROPERTY



PRIVACY

AUTHORIZATION

CONFIDENTIALITY

Innovative protection helps ensure confidentiality.

To help protect employees' privacy and intellectual property, the MX-M1056/M1206 are armed with leading-edge, **multi-layered security features**, including **Firmware Attack Prevention and Self Recovery**, which can help identify a malicious intrusion and restore the machine firmware to its original state. The **Application Whitelisting** feature detects access attempts to the machine file system and denies access if the source data is not on the whitelist.

Administrators can also apply **Active Directory® Group Policy** to the device, which offers centralized configuration and control. These models also support Active Directory user authentication and secure **single sign-on**. **Integrated ID card authentication** is also available as an option. At trade-in time, a convenient **End-of-Lease** feature can erase all data and personal information, as well as print a confirmation report.

Data Encryption and Overwrite

To help protect your data, the MX-M1056/M1206 models can encrypt document data using AES (Advanced Encryption Standard) **256-bit encryption** and overwrite data up to ten times.

Control Device Access Over the Network

To help restrict access to the device over the network, the MX-M1056/M1206 offers IPsec, SMB and extended support for **TLS Encryption** (Transport Layer Security), **IP/MAC** address filtering, IEEE 802.1x authentication, protocol enable/disable and port management for maximum security.

Data Security Kit (Optional)

The Sharp data security kit offers features, such as **Data Overwrite on-demand**, Document Filing access control, **Incorrect Password Lockout** and Restricted Status Display and Restricted List printing.

Sharp helps preserve confidential information and business to meet regulatory requirements, such as the Health Insurance Portability and Accountability Act (HIPAA) and the Gramm-Leach-Bliley Act (GLB). For additional information visit: www.sharppusa.com/security.





COMMITTED TO HELPING PROTECT THE ENVIRONMENT



Advanced Energy Saving Features

Utilizes several energy efficient technologies to minimize power consumption and maximize energy savings.

- An **LED exposure lamp** reduces power significantly.
- Define when power will be turned on and turned off with **customizable seven-day power management scheduler**.
- The Sharp **Auto Power Management** function allows the MFP to be set to shut off automatically based on usage trends.
- The Sharp **Eco-Scan mode** can shut off the fuser when scanning, previewing images and other operations.



Convenient toner access with ability to change while printing.

Sharp environmental initiatives and dedication set a high standard for the industry.

An Environmentally Responsible Approach to Product Design

Sharp is **committed to environmental sustainability and corporate responsibility** including planning, design, manufacturing, distribution and product end-of-life management. The MX-M1056 and MX-M1206 models adhere to the Sharp Green Products Guidelines in pursuit of these commitments. These guidelines include **designing products that consume less power**, using recycled materials, reducing the amount of material used in products and packaging, and labeling the type of materials used.

The MX-M1056/M1206 document systems are ENERGY STAR® qualified and RoHS compliant to restrict the use of hazardous substances. These products also have low TEC values. Sharp MFPs are EPEAT® registered.



Toner Recycling Program

As part of our commitment to help preserve the environment, Sharp offers **zero-waste-to-landfill** recycling for Sharp consumables at no cost to our customers. This program includes cartridges, bottles, toner collection containers and drum units. Sharp encourages customers to recycle their used Sharp toner cartridges in bulk by providing them with a pre-paid recycling kit for their return to our facility.

Environmental Leadership

As a testament to our commitment to the environment, Sharp is a **multi-year winner of the ENERGY STAR annual Excellence in Energy Proficiency Product Design**. Sharp is also a multi-year winner of the SmartWay® Excellence Award which recognizes companies for conserving energy and lowering greenhouse gas emissions in logistics and transportation.

For more information about Sharp's environmental leadership including information about energy efficient products, electronics or toner cartridge recycling, please visit www.sharppusa.com/environment.

